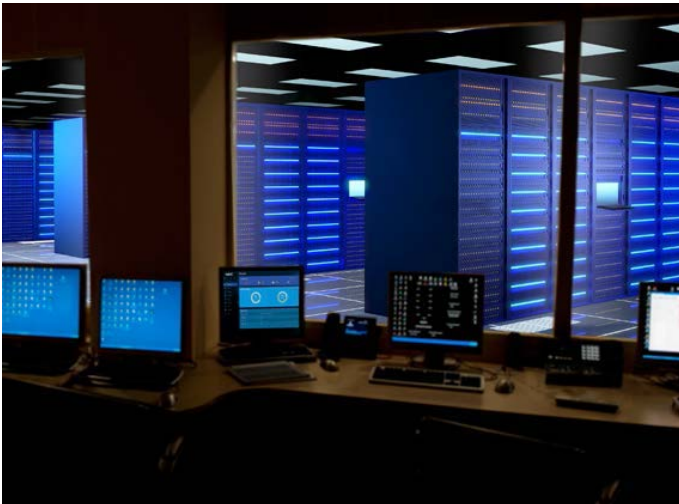


# QX-S5500 High Performance Ethernet Switches



## Overview

NEC's QX-S5500 Series is the latest development in Gigabit speed Layer 3 Ethernet switches. This powerful and highly secure switch series is based on industry-leading high-performance hardware architecture. It supports diversified services, high-capacity GE access port, as well as high density 10GE uplink, meeting the requirements for high-density campus access and high-performance aggregation.

## Main Product Features

- > 24 and 48 10/100/1000 Ethernet Ports
- > 4 SFP+ Uplink ports (10GbE)
- > 2 QSFP+ Uplink ports (40GbE)
- > Support for L2 and L3 forwarding, QoS, Security, Multicast & VLAN
- > Support Static and Dynamic policy-based routing functions
- > High Speed stack connection function (Intelligent ResilientFramework)

## At a Glance

- > High scalability and high port density Ethernet Plus switches that can be utilized in campus environments
- > Intelligent Resilient Framework (IRF) provides high reliability, load balancing and availability
- > SDN ready
- > High-performance IPv4/IPv6 service capabilities
- > Support for multiple services such as Mutli-VRF and MPLS VPN
- > Abundant QoS policies
- > Excellent manageability



QX-S5500 Series

# Specifications

Features		QX-S5524GT-4X2Q	QX-S5548GT-4X-2Q	
<b>Performance</b>	Switching capacity [bps]	288G	336G	
	Transfer rate [pps]	214.28M	249.98M	
	Switching method	S&F		
	MAC address table	32K		
	Routing table (IPv4/IPv6)	32K/16K		
	ARP table	16K		
<b>Interface</b>	1Gbe	10/100-1000BASE-T	24	48
		SFP slot	0	0
	10Gbe	SFP+ slot	4	4
	40Gbe	QSFP+ slot	2	2
	Console Port	√	√	
<b>IRF</b>	IRF stack version	IRFv2		
	Maximum number of IRF stacks	9		
	MAD/ISSU	√/√		
<b>VLAN</b>	IEEE802.1Q	√		
	Port VLAN	√		
	Protocol VLAN	√		
	Voice VLAN	√		
	Max. number of VLAN [number of settable IP addresses]	4094[1024]		
	VLAN mapping	√		
	QinQ	√		
<b>Port function</b>	Auto Negotiation/fixed speed and duplex (full/half)	√/√		
	Auto MDI • MDIX/ fixed MDIX	√/√		
	Flow control (IEEE802.3X)	√		
	EAP transmitted/BPDU transmitted	√/√		
	Port isolate	√		
	Packet transfer suppression	B/M/U		
	Storm-constrain	B/M/U		
	Jumbo Frame (byte)	10000		
	Loop detection (multi port loop supported)	√		
	One-way link detection DLDP)	√		
	Ethernet OAM (IEEE802.3ah)	√		
	Link aggregation (LACP supported)	√		
	<b>Spanning tree</b>	S/R/M/P		
<b>Ring protocol (RRPP)</b>	√			
<b>Packet filter (ACL)</b>	√			
<b>IPv6 management</b>	√			
<b>QoS</b>	PQ	√		
	WRR	√		
	WFQ	√		
	WRED	√		
	Bandwidth control	LR/CAR/GTS		
	Trust/Marking	√/√		
	Number of QoS classes	8		

√ = Available / - = Not Available

## QX-S5500 Series High Performance Ethernet Switches

## Specifications (cont'd)

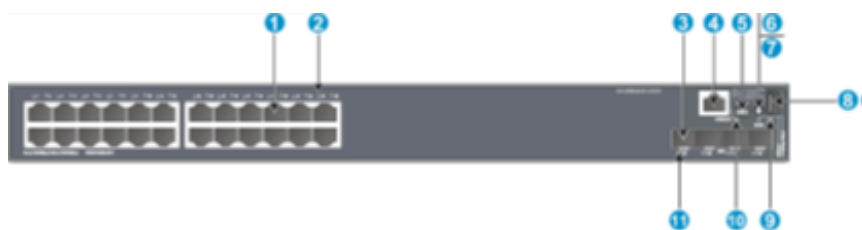
Features		QX-S5524GT-4X2Q	QX-S5524GT-4X-2Q	
<b>Security</b>	802.1X authentication		√	
	MAC address authentication		√	
	Triple authentication		√	
	Port security		√	
	Dynamic VLAN		PORT/MAC	
	Local authentication		√	
<b>Routing related</b>	Static		√	
	RIP		v1/v2/ng	
	QSPF		v2/v3	
	BGP		4/4+	
	Policy-Based Routing		√	
	VRRP		√	
	BFD		√	
<b>Multicasting</b>	Multicast VLAN		√	
	IGMPv1/v2/v3 snooping		√	
	MLDv1/v2 snooping		√	
	IGMPv1/v2/v3		√	
	MLDv1/v2		√	
	PIM-SM/PIM-SSM		√/√	
<b>Tunnel</b>	GRE / IPv4oIPv4 / IPv4oIPv6 / IPv6oIPv4 / Pv6oIPv6		√/√/√/√/√/√	
<b>Management function</b>	telnet/ssh/WEB console		√/√/-	
	FTP • TFTP client/FTP server		√/√	
	LLDP		√	
	DHCP		C/R/SV/SN	
	NTP client/NTP server		√/√	
	Syslog		√	
	Log file		√	
	SNMPv1/v2c/v3		√	
	Standard MIB, Private MIB		√	
	RMON		√	
	sFlow		√	
	Port mirroring		√	
	<b>Eco function</b>	Scheduled task		√
		IEEE802.3az		√
<b>Physical specification</b>	External dimension (w x d x h) [mm]	440 x 260x 43.6		
	Weight	4.1 kg	4.4 kg	
	AC power input (50/60Hz)	100~240V (90~264V)		
	DC power input	-60~-48V (-72~-36V)		
	Maximum power consumption (PoE fed power included)	66W (AC) 68W (AC)	80W (AC) 82W (AC)	
	Fanless	-		
	Operating temperature/humidity (non-condensing req.)	0~45°/10~90%		
<b>VCCI ClassA/RoHS support</b>		√/√		

√ = Available / - = Not Available



## QX-S5500 Series High Performance Ethernet Switches

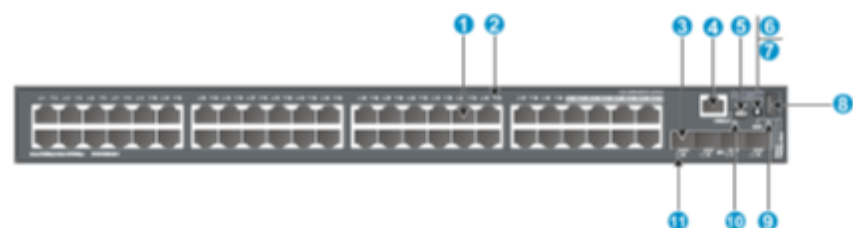
## QX-S5524GT-4X2Q panel views



- |                                                     |                             |
|-----------------------------------------------------|-----------------------------|
| (1) 10/100/1000 BASE-T autosensing Ethernet port    | (7) Port mode LED           |
| (2) 10/100/1000 BASE-T autosensing Ethernet portLED | (8) USB port                |
| (3) SFP+ port                                       | (9) System status LED (SYS) |
| (4) Console port                                    | (10) RPS status LED (RPS)   |
| (5) USB mini Console port                           | (11) SFP+ port LED          |
| (6) Port LED mode switching button                  |                             |



- |                               |                     |
|-------------------------------|---------------------|
| (1) QSFP+ port LED            | (4) RPS receptacle  |
| (2) QSFP+ port                | (5) Grounding screw |
| (3) AC-input power receptacle |                     |



- |                                                     |                             |
|-----------------------------------------------------|-----------------------------|
| (1) 10/100/1000 BASE-T autosensing Ethernet port    | (7) Port mode LED           |
| (2) 10/100/1000 BASE-T autosensing Ethernet portLED | (8) USB port                |
| (3) SFP+ port                                       | (9) System status LED (SYS) |
| (4) Console port                                    | (10) RPS status LED (RPS)   |
| (5) USB mini Console port                           | (11) SFP+ port LED          |
| (6) Port LED mode switching button                  |                             |



- |                               |                     |
|-------------------------------|---------------------|
| (1) QSFP+ port LED            | (4) RPS receptacle  |
| (2) QSFP+ port                | (5) Grounding screw |
| (3) AC-input power receptacle |                     |

For further information please contact your local NEC representative or:

**North America (USA)**

NEC Corporation of America  
[www.necam.com](http://www.necam.com)

**South Asia (Singapore)**

NEC Asia Pacific  
[www.nec.com.sg](http://www.nec.com.sg)

**Corporate Headquarters (Japan)**

NEC Corporation  
[www.nec.com](http://www.nec.com)

**Oceania (Australia)**

NEC Australia Pte Ltd  
[www.nec.com.au](http://www.nec.com.au)

**EMEA (Europe, Middle East, Africa)**

NEC Enterprise Solutions  
[www.nec-enterprise.com](http://www.nec-enterprise.com)

About NEC Corporation: NEC Corporation is one of the world's leading providers of Internet, broadband network and enterprise business solutions dedicated to meeting the specialized needs of its diverse and global base of customers. NEC delivers tailored solutions in the key fields of computer, networking and electron devices, by integrating its technical strengths in IT and Networks. The NEC Group employs more than 150,000 people worldwide. For additional information, please visit the NEC home page at: <http://www.nec.com>

January 18 © 2018 NEC Corporation. NEC is a registered trademark of NEC Corporation. All rights reserved. Other product or service marks mentioned are the trademarks of their respective owners. Models may vary for each country. Due to continuous improvements this specification is subject to change without notice.